

Cody Meetinghouse Standard Plan AP Placement Report v4

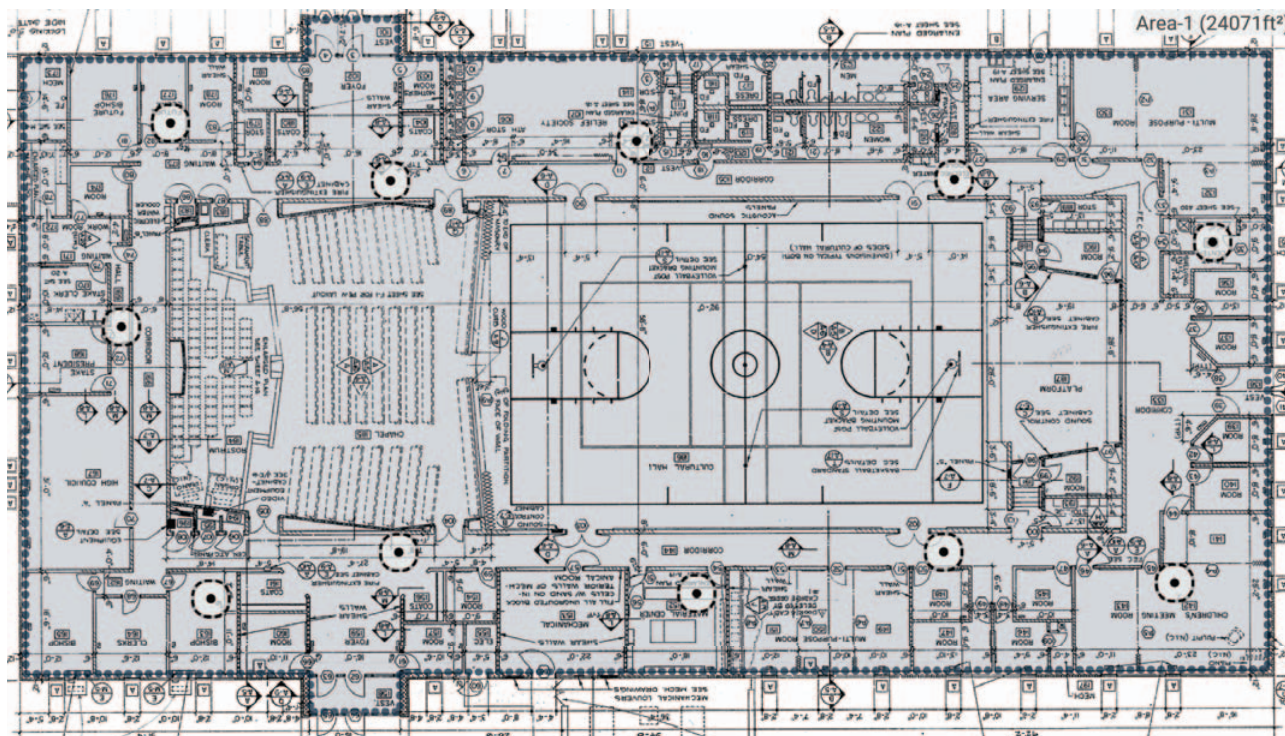


Completed by: Jon Loutensock
Completion date 08/26/2025:

Project description
<p>The AP placement and signal strength predictions are based on assumptions made for signal propagation through interior wall materials. Based on those assumptions there will be a greater margin of error between the prediction and what may be experienced.</p> <p>Interior wall material was set as hollow block (cinderblock).</p> <p>Without measured attenuation and AP signal deviation measurements, the actual signal propagation will vary.</p> <p>The AP placement was made based on optimizing 5 GHz signals for primary signal strength. Secondary coverage was not a requirement.</p> <p>The C9172I access point is represented in this prediction.</p>

Cody Meetinghouse Standard Plan - Main Floor

Survey routes and Access Points for Cody Meetinghouse Standard Plan - Main Floor



View as / Project Offset:	Mobile Device
---------------------------	---------------

Area-1 (24,071 ft²)

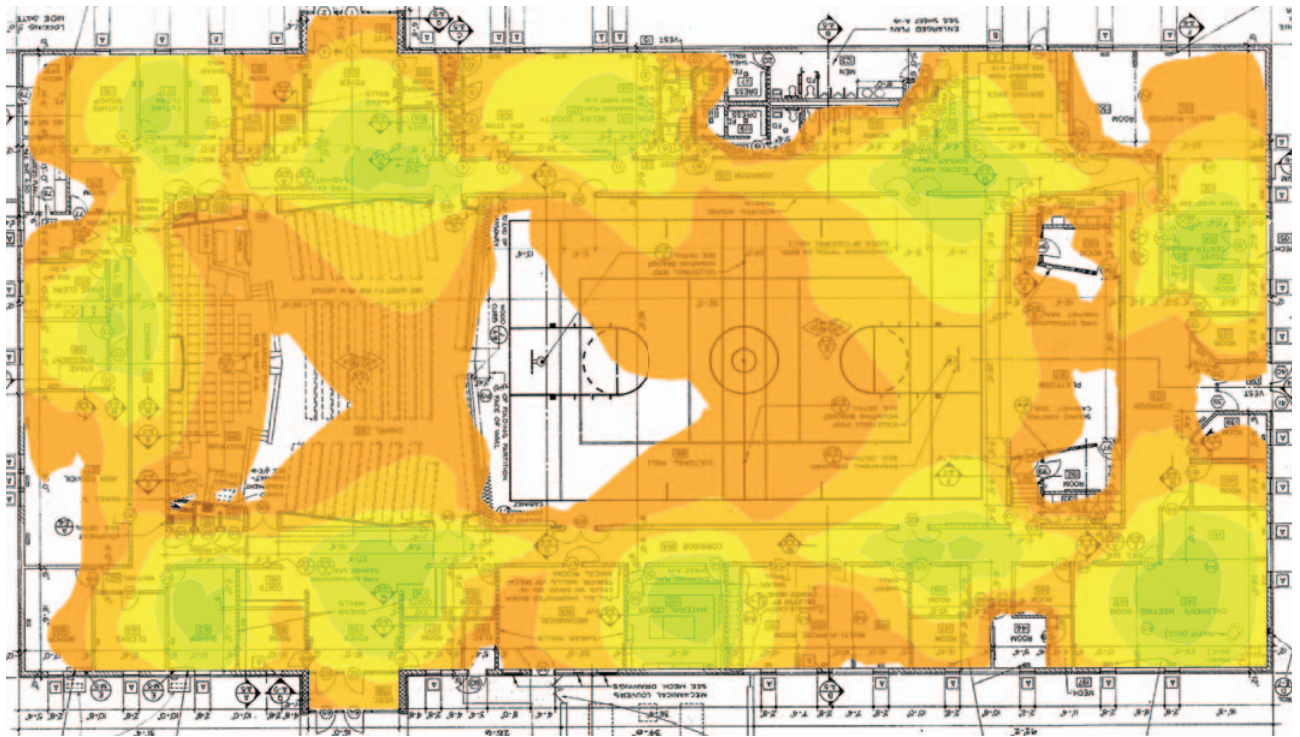
Coverage Requirement: LDS		
2.4 GHz	Signal Strength Min	-75.0 dBm
	Secondary Signal Strength Min	-70.0 dBm
	Signal-to-Noise Ratio Min	20.0 dB
	Data Rate Min	24 Mbps
	Channel Interference Max	2 at min. -85.0 dBm
	Round Trip Time (RTT) Max	200 ms
	Packet Loss Max	0.0 %
5 GHz	Signal Strength Min	-75.0 dBm
	Secondary Signal Strength Min	-70.0 dBm
	Signal-to-Noise Ratio Min	25.0 dB

Cody Meetinghouse Standard Plan AP Placement Report v4

	Data Rate Min 24 Mbps Channel Interference Max 1 at min. -85.0 dBm Round Trip Time (RTT) Max 200 ms Packet Loss Max 0.0 %
6 GHz	Signal-to-Noise Ratio Min 25.0 dB Data Rate Min 24 Mbps Channel Interference Max 1 at min. -85.0 dBm Round Trip Time (RTT) Max 200 ms Packet Loss Max 0.0 %
Capacity Requirement	No capacity devices for this area
Notes	

Signal Strength for Cody Meetinghouse Standard Plan - Main Floor on 2.4 GHz band

Signal Strength - sometimes called coverage - is the most basic requirement for a wireless network. As a general guideline, low signal strength means unreliable connections, and low data throughput.

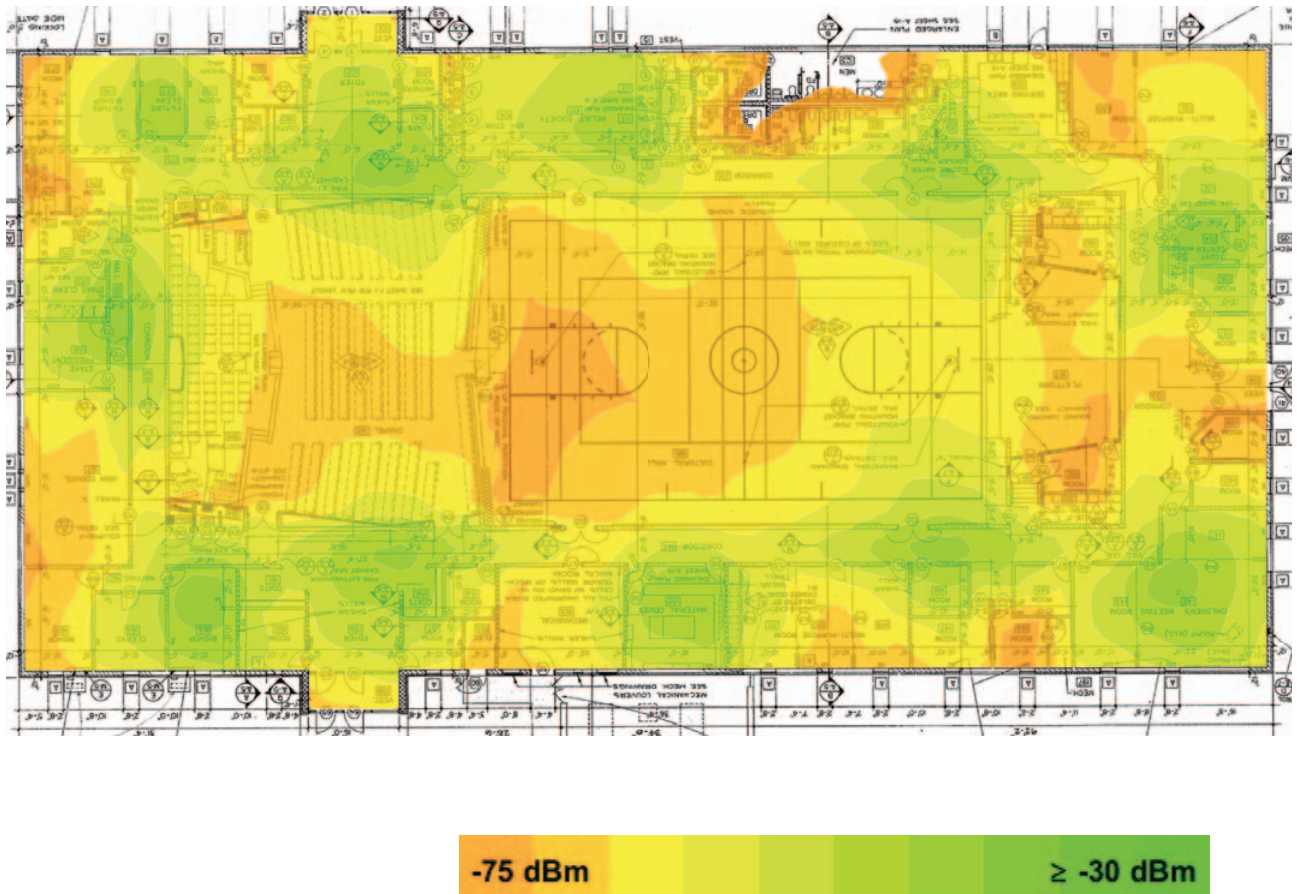


-75 dBm

≥ -30 dBm

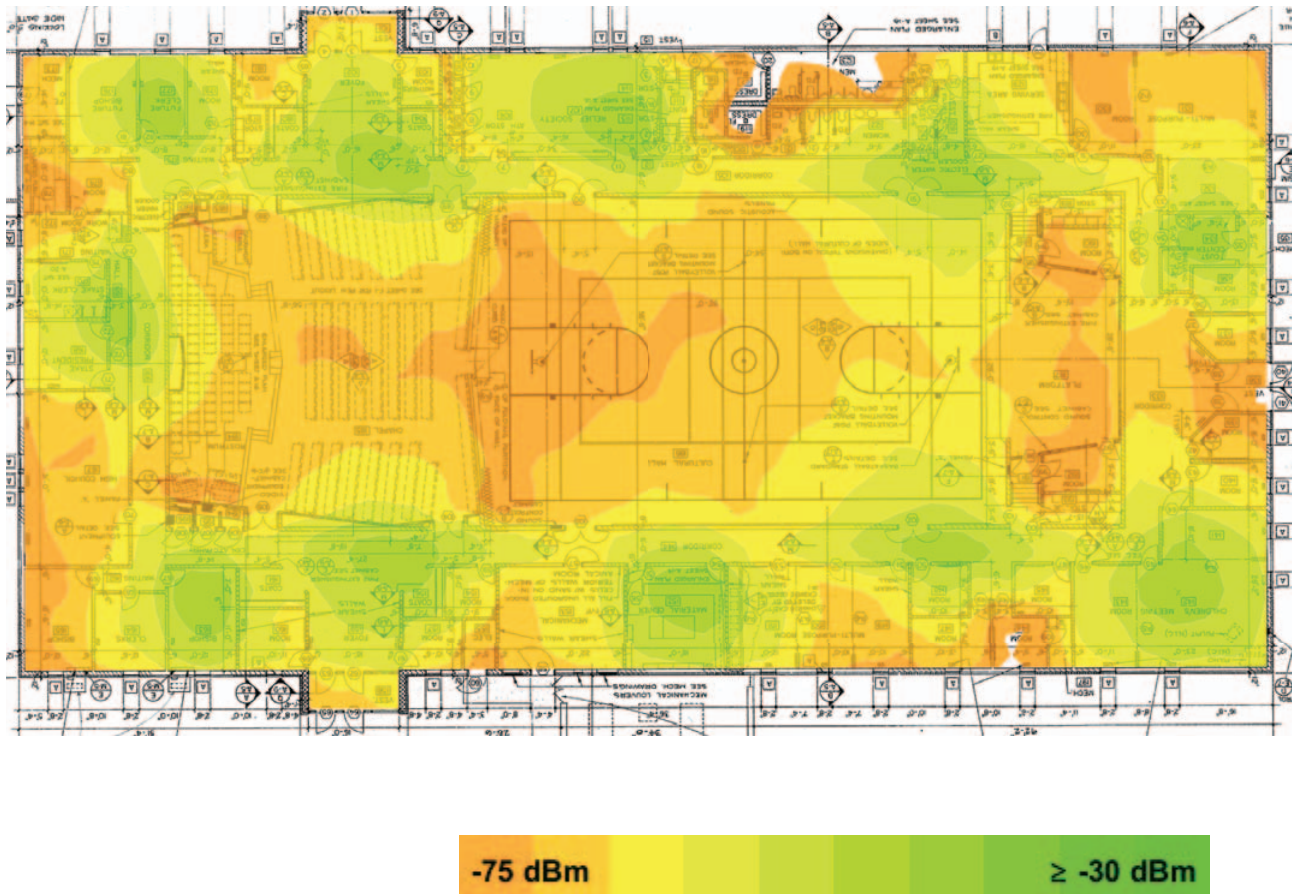
Signal Strength for Cody Meetinghouse Standard Plan - Main Floor on 5 GHz band

Signal Strength - sometimes called coverage - is the most basic requirement for a wireless network. As a general guideline, low signal strength means unreliable connections, and low data throughput.

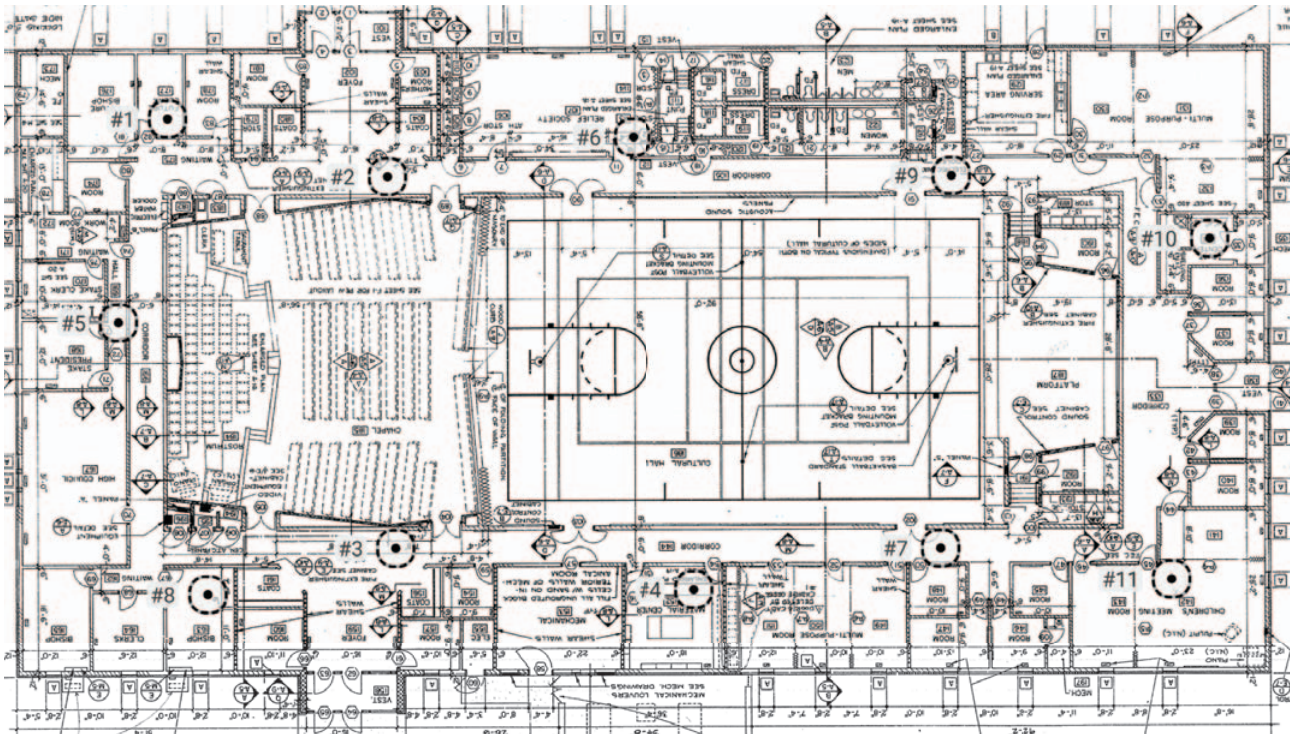


Signal Strength for Cody Meetinghouse Standard Plan - Main Floor on 6 GHz band

Signal Strength - sometimes called coverage - is the most basic requirement for a wireless network. As a general guideline, low signal strength means unreliable connections, and low data throughput.



Access Points on Cody Meetinghouse Standard Plan - Main Floor



Access Points on Cody Meetinghouse Standard Plan - Main Floor

Simulated Access Points on Cody Meetinghouse Standard Plan - Main Floor

AP #	Access Point			
1	Simulated AP-001		Cisco CW9172I	
	Wi-Fi 7	11	8.0 dBm	Cisco CW9172I 2.4GHz
	Wi-Fi 7	157	14.0 dBm	Cisco CW9172I 5GHz
	Wi-Fi 7	1@40 (6 GHz)	14.0 dBm	Cisco CW9172I 6GHz
	Bluetooth	-	0.0 dBm	Cisco CW9172I BLE
2	Simulated AP-002		Cisco CW9172I	
	Wi-Fi 7	1	8.0 dBm	Cisco CW9172I 2.4GHz
	Wi-Fi 7	100	14.0 dBm	Cisco CW9172I 5GHz

Cody Meetinghouse Standard Plan AP Placement Report v4

	Wi-Fi 7	1@40 (6 GHz)	14.0 dBm	Cisco CW9172I 6GHz
	Bluetooth	-	0.0 dBm	Cisco CW9172I BLE
3	Simulated AP-003		Cisco CW9172I	
	Wi-Fi 7	6	8.0 dBm	Cisco CW9172I 2.4GHz
	Wi-Fi 7	132	14.0 dBm	Cisco CW9172I 5GHz
	Wi-Fi 7	1@40 (6 GHz)	14.0 dBm	Cisco CW9172I 6GHz
	Bluetooth	-	0.0 dBm	Cisco CW9172I BLE
4	Simulated AP-004		Cisco CW9172I	
	Wi-Fi 7	11	8.0 dBm	Cisco CW9172I 2.4GHz
	Wi-Fi 7	149	14.0 dBm	Cisco CW9172I 5GHz
	Wi-Fi 7	1@40 (6 GHz)	14.0 dBm	Cisco CW9172I 6GHz
	Bluetooth	-	0.0 dBm	Cisco CW9172I BLE
5	Simulated AP-005		Cisco CW9172I	
	Wi-Fi 7	1	8.0 dBm	Cisco CW9172I 2.4GHz
	Wi-Fi 7	64	14.0 dBm	Cisco CW9172I 5GHz
	Wi-Fi 7	1@40 (6 GHz)	14.0 dBm	Cisco CW9172I 6GHz
	Bluetooth	-	0.0 dBm	Cisco CW9172I BLE
6	Simulated AP-006		Cisco CW9172I	
	Wi-Fi 7	11	8.0 dBm	Cisco CW9172I 2.4GHz
	Wi-Fi 7	124	14.0 dBm	Cisco CW9172I 5GHz
	Wi-Fi 7	1@40 (6 GHz)	14.0 dBm	Cisco CW9172I 6GHz
	Bluetooth	-	0.0 dBm	Cisco CW9172I BLE
7	Simulated AP-007		Cisco CW9172I	
	Wi-Fi 7	11	8.0 dBm	Cisco CW9172I 2.4GHz
	Wi-Fi 7	36	14.0 dBm	Cisco CW9172I 5GHz
	Wi-Fi 7	1@40 (6 GHz)	14.0 dBm	Cisco CW9172I 6GHz
	Bluetooth	-	0.0 dBm	Cisco CW9172I BLE

Cody Meetinghouse Standard Plan AP Placement Report v4

8	Simulated AP-008		Cisco CW9172I	
	Wi-Fi 7	11	8.0 dBm	Cisco CW9172I 2.4GHz
	Wi-Fi 7	48	14.0 dBm	Cisco CW9172I 5GHz
	Wi-Fi 7	1@40 (6 GHz)	14.0 dBm	Cisco CW9172I 6GHz
	Bluetooth	-	0.0 dBm	Cisco CW9172I BLE
9	Simulated AP-009		Cisco CW9172I	
	Wi-Fi 7	1	8.0 dBm	Cisco CW9172I 2.4GHz
	Wi-Fi 7	165	14.0 dBm	Cisco CW9172I 5GHz
	Wi-Fi 7	1@80 (6 GHz)	14.0 dBm	Cisco CW9172I 6GHz
	Bluetooth	-	0.0 dBm	Cisco CW9172I BLE
10	Simulated AP-010		Cisco CW9172I	
	Wi-Fi 7	1	8.0 dBm	Cisco CW9172I 2.4GHz
	Wi-Fi 7	56	14.0 dBm	Cisco CW9172I 5GHz
	Wi-Fi 7	1@80 (6 GHz)	14.0 dBm	Cisco CW9172I 6GHz
	Bluetooth	-	0.0 dBm	Cisco CW9172I BLE
11	Simulated AP-011		Cisco CW9172i	
	Wi-Fi 7	1	8.0 dBm	Cisco CW9172I 2.4GHz
	Wi-Fi 7	140	14.0 dBm	Cisco CW9172I 5GHz
	Wi-Fi 7	1@80 (6 GHz)	14.0 dBm	Cisco CW9172I 6GHz
	Bluetooth	-	0.0 dBm	Cisco CW9172I BLE